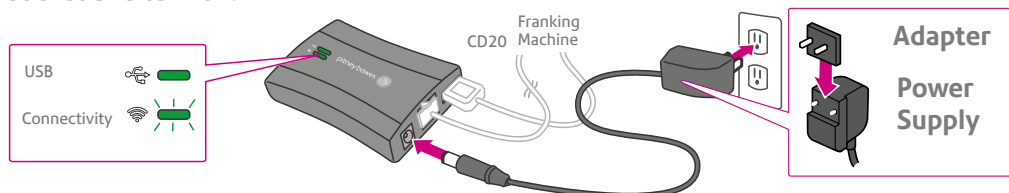


7 Power up your Smartlink

Slide the appropriate adapter onto the Smartlink power supply. Plug the power adapter cable into the Smartlink device. Now connect the power adapter to the wall socket and turn on.



Once the Smartlink device has connected successfully to the internet the connectivity light will flash green.

8 Power up your franking machine

Power up and turn on your franking machine. Refer to your franking machine Installation Poster for details on how to power up safely and correctly.

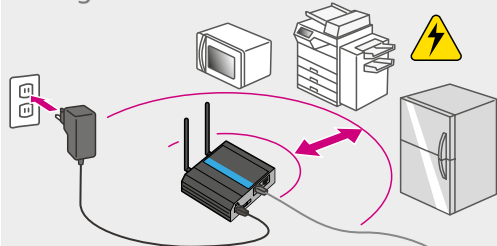
Wait a few minutes and the USB light on the Smartlink device will show a solid green to indicate that connection to meter has been established.

Your franking machine is now ready for you to use.

Troubleshooting

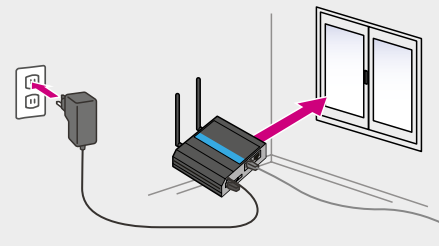
Procedure A

Move the device at least 3 feet or 1 meter away from any electric appliances that could be causing interference. You might need to relocate your franking machine or use a longer Ethernet cable if available.



Procedure B

Move the device closer to a window or outside wall. You might need to relocate your franking machine or use a longer Ethernet cable if available.



www.pitneybowes.com/uk/support
www.pitneybowes.com/ie/support



© 2025 Pitney Bowes Ltd.



Connecting using both a Cellular CD20 and a Smartlink™ Device

UK/ROI

Your product has been supplied with a Smartlink and an accompanying CD20 cellular 4G device for easy connection of your meter.

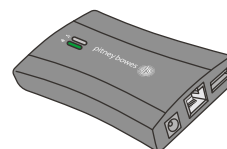
Ensure that you have both devices before starting to install and disregard any instructions in the CD20 or Smartlink individual boxes in favour of this document for combined installation.

This process is an update to any references to Smartlink installation found in the **Connect to the outside world** section of your product installation poster.

What's in the box?

Check that your two device boxes contain the below items.

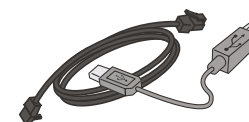
Smartlink box



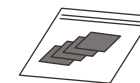
Smartlink Device



Universal power cord

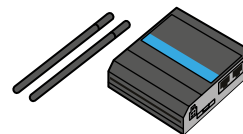


A network cable and a USB cable



Velcro fastening strips

CD20 box



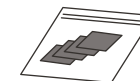
CD20 Device



Universal power cord



A network cable



Velcro fastening strips

Be sure to remember which power cord belongs to which device.

Installation will only require one network cable.

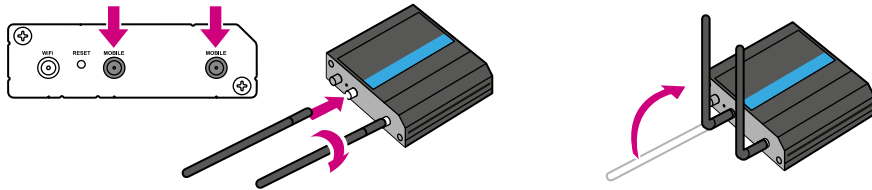
Follow the instructions overleaf to install your connectivity solution.

Installing your connectivity solution

Ensure your Franking machine is powered off before starting the installation.

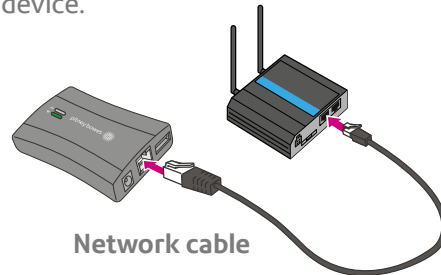
1 Assemble the antennas to the CD20 connectivity device

Screw the antennas tightly to the device. Adjust the angle of the antennas appropriately.



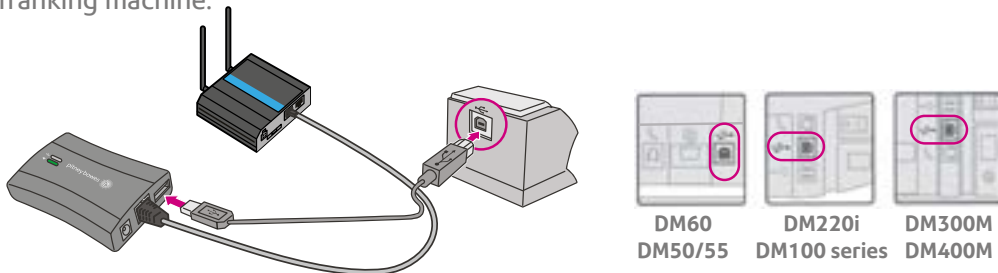
2 Connect your CDEU device to your Smartlink device

Use an appropriate length network cable to allow you to position your CD20 device next to a window and the Smartlink device near to your Franking machine, connect your CD20 device to your Smartlink device.



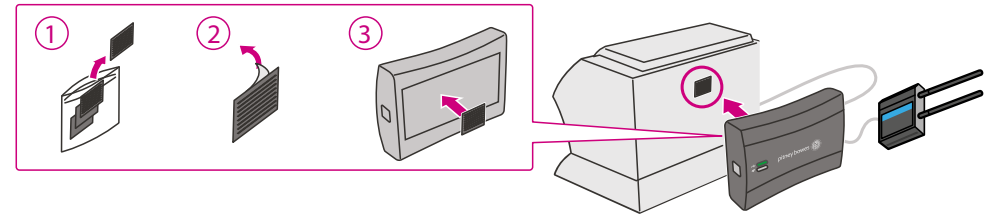
3 Connect your Smartlink device to your franking Machine

Plug the USB cable into your SmartLink Device and into the back of your franking machine.



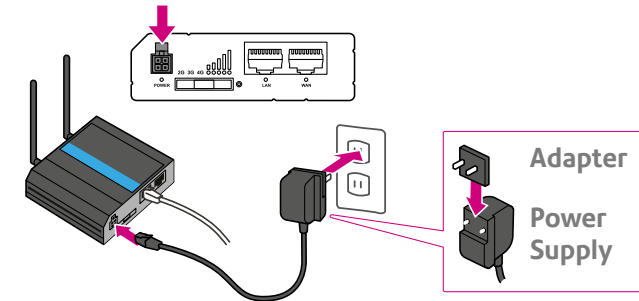
4 Attach the Smartlink to the franking machine

Attach the SmartLink device to your franking machine with the included adhesive fastener strips and place your CD20 device in the desired position.



5 Power up your CD20 device

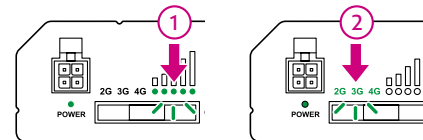
Slide the appropriate adapter onto the power supply. Plug the power adapter cable into the CD20 device. Now connect the power adapter to the wall socket and turn on.



6 Check CD20 Connection indicator

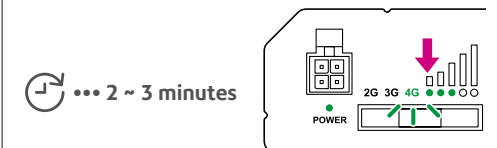
First, the signal strength LEDs will flash green. Second, the mobile network type LEDs will be flashing green.

If that has not happened. Visit the Pitney Bowes Support site located at the end of these instructions.



In about 2 ~ 3 minutes the rightmost network type LED and at least two signal strength LEDs should be turn to green.

If not try the following procedure A or B in Troubleshooting.



Once they turn to green, move to step 7.