



Mailing  
Inserting

Relay® 5000 inserter

Fast, reliable, and  
flexible technology  
for your mail.



# Simplify complex mail

The Relay® 5000 inserting system is designed on a fast, reliable folding and inserting platform that helps ensure that the right contents get into the right envelope.

## Improve productivity without risking precision.

Mail continues to be critical to the success of your company, from sending monthly bills to existing customers to building your business via direct mail. Achieving accuracy, security and speed isn't merely important. It's necessary. Until now, it's been difficult to identify an ideal solution that can keep your mailing process precise and accurate.

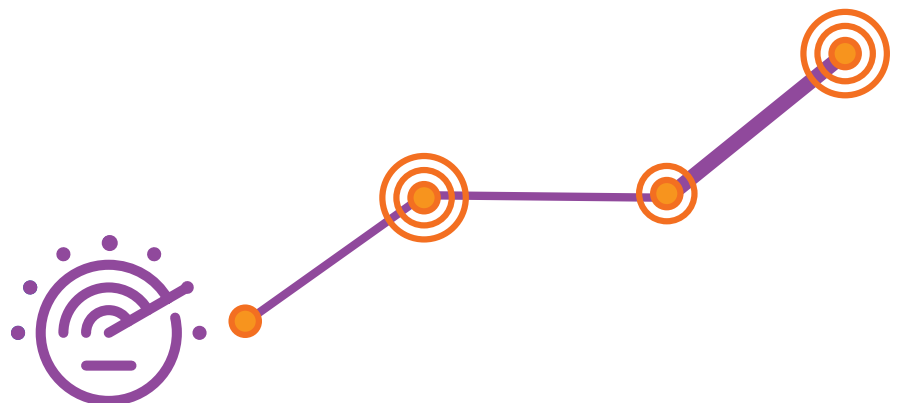
## Keep your mail moving with outstanding flexibility and efficiency.

The Relay 5000 inserter enables fast, consistent production of both simple and complex jobs. The proven reliable chassis uses the same straight paper path design found on our top of the line inserters. The Relay 5000 also gives you the flexibility to handle folded or unfolded sheets, without any manual changeover. That saves you time and effort.

## The Relay 5000 does the work... so you don't have to.

Set and start your mail runs in seconds with the intuitive user interface. With the ability to program your jobs with real names — not just numbers — you can switch settings such as form letters to single page letters to variable page bills with a simple press of a button. The simple-to-follow onscreen user guides walk you through the loading of paper, inserts, and envelopes. With guesswork eliminated, the Relay 5000 is easy enough to use for even infrequent operators.

- Finish up to 4,000 envelopes per hour.
- Process monthly volumes up to 62,500 finished envelopes
- Multiple output options to suit your workflow.
- Optional ergonomic height-adjustable table.



Reliable and flexible design keeps your documents and envelopes moving quickly.

# Relay<sup>®</sup> 5000 features

## Envelope feeder

Easily switch between C4 and C5/DL envelopes, load on-the-fly without stopping the job.



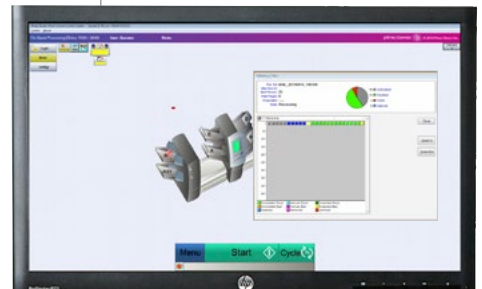
## Control panel

Provides straightforward job creation and selection, with job status display all in one convenient user interface.



## File-based processing

Mail piece integrity option that provides total control, visibility and reporting for your mail production process.



## High-capacity sheet feeder

Each high-capacity sheet feeder has two 1000-sheet capacity feeder trays (2000 total) to keep your production moving.



## Tower feeders

One dedicated outer envelope feeder for DL, C5 or C4 envelopes combined with 3 flexible feeders for either inserts or sheets.

## Folder

Folds collated sheets into C-fold, Z-fold, Single-Fold, or Double-Fold. No fold for flat envelopes.

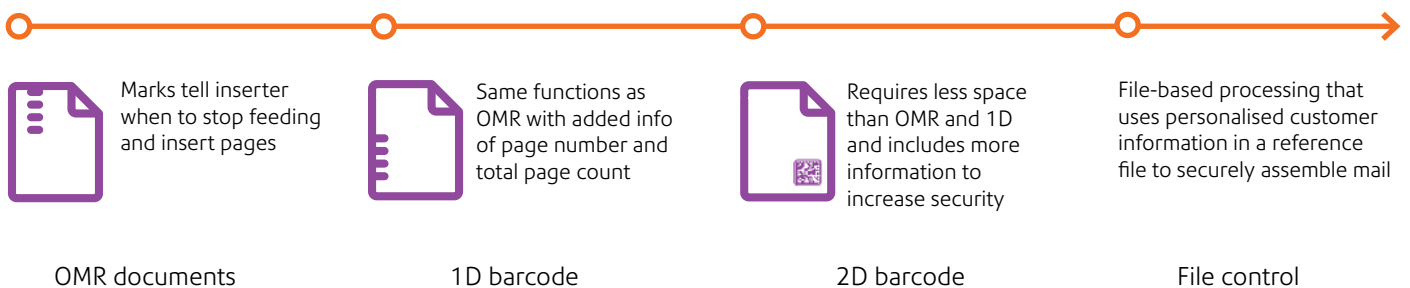
## Reverse accumulator

Ensures the address shows properly in the window of an envelope whether the address is on the top, middle, or bottom of the page.

# Your production is only as good as the accuracy it provides.

Information privacy, marketing campaigns, incoming revenue, and customer retention, all rely on superior mail accuracy when a customer opens it. The Relay® 5000 includes flexible barcode scanning options such as OMR, 1D and 2D. This technology lets you accurately assemble your variable page mail, thus eliminating the need to manually sort documents by page count.

## Read Rates | Accuracy | Integrity | Data Privacy



## File control (file-based processing)

The Relay 5000 goes beyond barcode scanning. Now, Pitney Bowes offers our world-class file-based processing capabilities in a mid-

volume inserting system. File-based processing checks and cross-checks every page in your mailing. This gives you total visibility to each mail piece

and helps prove that you've safeguarded the private information that your customers entrust you with.

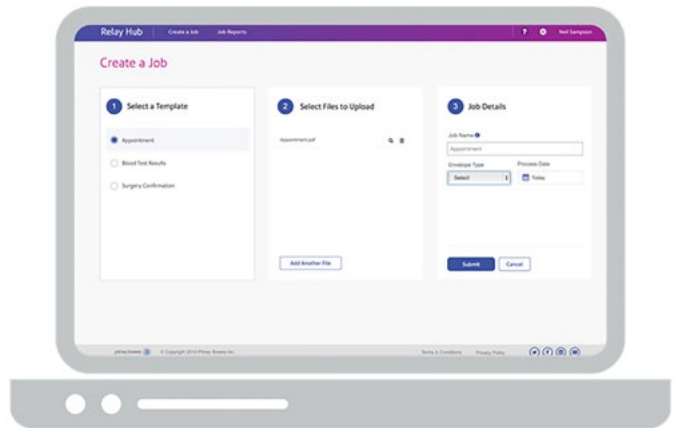


The reference file is used to control and constantly verify pages are accurately folded and inserted.

# Relay<sup>®</sup> hub from the Pitney Bowes Commerce Cloud

Protect private customer data the easy way.

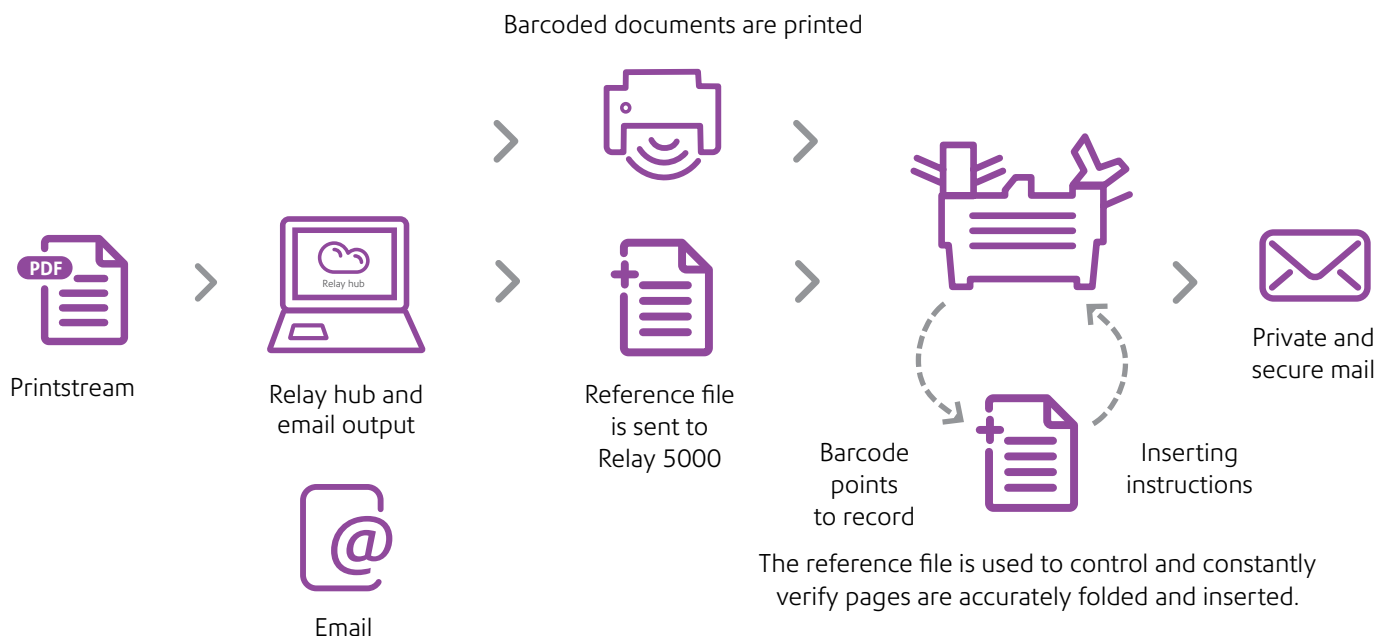
The Relay hub leverages the simplicity and speed of SaaS to help you add security to your mail and workflow, without interrupting your current systems.



The Relay hub is a powerful, simple, secure cloud solution that works with your existing print streams to add scan codes to existing documents. It

also helps you transition documents to email when you're ready to send. For customers wanting more digital communication options, the Relay

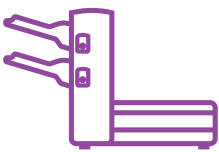

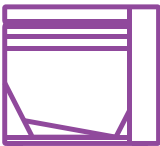
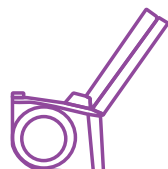
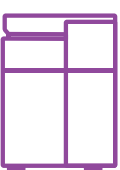
hub can seamlessly shift print streams used for physical mail and adapt it to digital channels. This includes email sending and archiving.



**We're here to help.** At Pitney Bowes, we believe that every document should be treated with the same level of scrutiny, regardless if you're sending communications using physical or digital mail, producing them in-house or outsourcing your production.

Specifications	
Throughput	4,000 per hour
Monthly capacity	62,500
Maximum number of feeders	7 (4 High-capacity Sheet Feeders + 3 Sheet/Insert feeders)
Fold options	C, Z, Half, Double, No Fold
Integrity options	OMR, 1D, 2D, exit scanning, file-based processing
Programmable jobs	24
<b>Tower sheet trays</b>	
Capacity per feeder	350 sheets
Paper sizes	Minimum 127 mm width x 135 mm length Maximum 250 mm width x 356 mm length
Paper weights	Minimum 160 gsm to 175 gsm
<b>High-capacity sheet feeder</b>	
Capacity per feeder	Optional (up to 2 per base system) 2000 sheets (1000 per feeder tray)
Paper sizes	Minimum 203 mm width x 232 mm length Maximum 216 mm width x 297 mm length
Paper weights	Minimum 75 gsm to 90 gsm
<b>Insert feeder</b>	
Capacity	350 inserts
Sizes	Minimum 72 mm height x 127 mm length Maximum 153 mm height x 250 mm length
Thickness, compressed	Minimum 0.076 mm to maximum 2.54 mm
<b>Envelope feeder</b>	
Capacity	250 Letter (100 Flat)
Letter-sized	Minimum 89 mm height x 162 mm length Maximum 165 mm height x 266 mm length
Flat-sized	Minimum 162 mm height x 165 mm length Maximum 266 mm height x 330 mm length
Envelope weights	Letter: Minimum 70 gsm to maximum 90 gsm Flats: Minimum 80 gsm to maximum 90 gsm
<b>Physical dimensions (includes tower feeder trays)</b>	
Length	153.6 cm base, 227.3 cm overall length (base unit fits on 152.4 cm table)
Depth	57.9 cm
Height	78.7 cm
Weight	148 kg

### Accessory physical specifications

	<b>High capacity sheet feeder</b>			<b>Horizontal belt stacker</b>	
	Height	79 cm		Height	46 cm
	Table-length requirement	76.5 cm		Table-length requirement	N/A
	Installed Length	125 cm		Installed Length (floor)	56 cm
	<b>Exit transport</b>			<b>Vertical power stacker</b>	
	Height	41 cm		Height	79 cm
	Table-length requirement	46 cm		Table-length requirement	N/A
	<b>Flats sealer for C4 envelopes</b>				
	Height	79 cm			
	Table-length requirement	30.5 cm			
	Installed Length	30.5 cm			

Relay<sup>®</sup> 5000 inserter  
system precisely folds  
inserts and seals up to  
4,000 pieces per hour.



**United Kingdom**

Building 5, Trident Place  
Hatfield Business Park  
Mosquito Way  
Hatfield  
Hertfordshire AL10 9UJ  
[ukenquiries@pb.com](mailto:ukenquiries@pb.com)

For more information, call 08444 992 992  
or visit us online: [pitneybowes.com/uk](http://pitneybowes.com/uk)