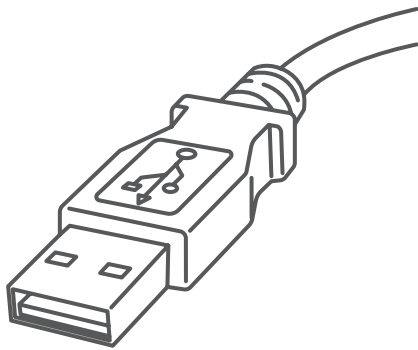


# Stand-Alone Network Printer

Microsoft Windows Installation Instruction  
USB Printer Connection



Read Now BEFORE you unpack your equipment

[Continue reading below](#)



## Right, let's get your Network Printer up and running quickly...

Let's first get together the things you will need:

- The box containing your Network Printer.
- A PC on which you have full admin rights to allow downloading and installing software.
- 1 available USB port on your PC.

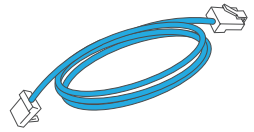
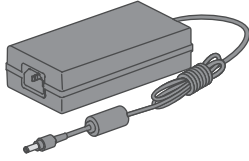
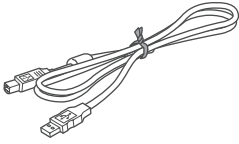
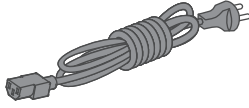
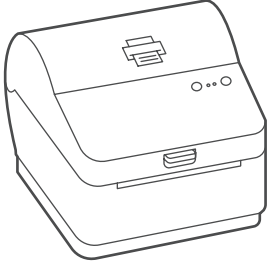
---

# 1. Opening the box and unpacking.

Here's a diagram and explanation of the items you should find in your box.

If you have any problems during this installation, refer to 'Troubleshooting'.

Printer



USB

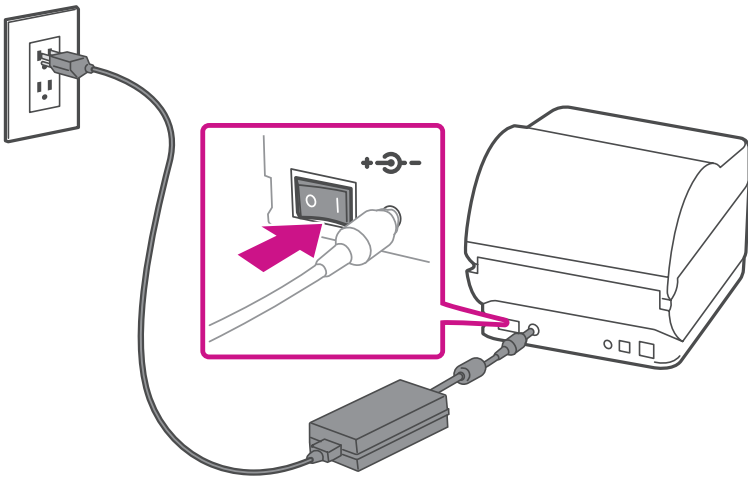
Power Cord

Network Cable  
(not used for  
USB installation)

---

# 2. Connecting the printer.

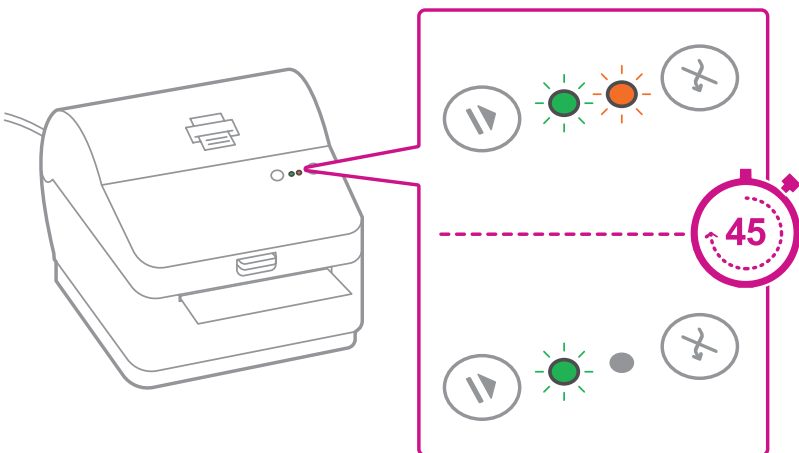
Connect the power cord and adapter to your printer (as shown) and switch on.



---

# 3. Printer ready.

Wait for approximately 45 seconds until the green light remains constant and the printer is ready.



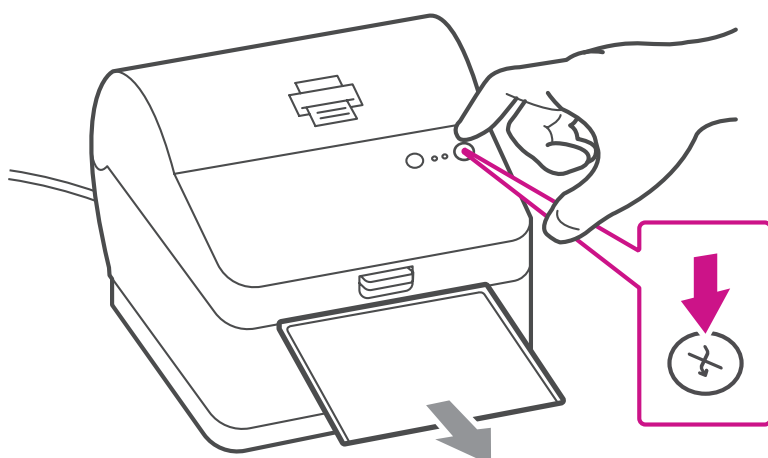
---

## 4. Aligning the label roll.

Press the (X) button and check that the label feeds out correctly.

Note: If the label does not feed correctly please refer to label alignment instructions inside the printer top cover.

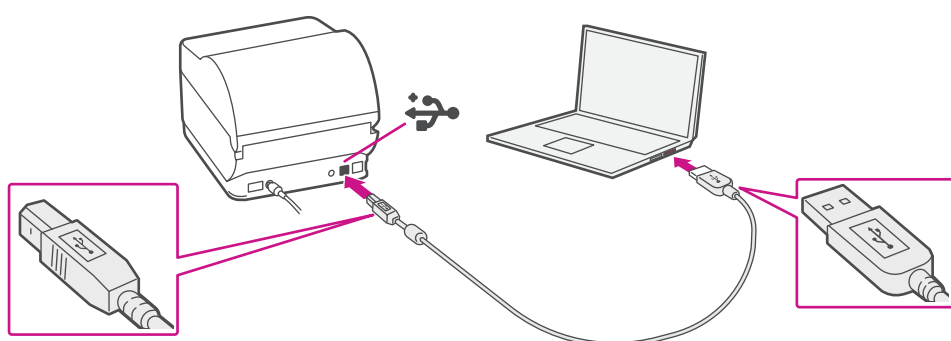
Tear off the correctly dispensed label.



---



## 5. Connecting the printer and driver download.

Connect your printer to your computer with the USB cable. Your Printer Driver should automatically download and install. If this does not happen, please follow step 6 below. Otherwise continue to step 7.



---

## 6. Manually download the printer driver.

1. Go to [support.pb.com/workstation](https://support.pb.com/workstation)
2. Select **Download Drivers for Workstation w1110 Label Printer** in the  Downloads section.
3. Select  in the Download your Windows printer driver section.
4. Select **Run** or **Open** dependant on your browser.
5. Accept the licence agreement and follow the on screen prompts to install.
6. Select Datamax-O'Neil w1110.
7. Continue to follow the on-screen prompts and click **Finish/ Close**.



Note: You may need to check your downloads folder to install Printer Drivers.

---

## 7. Test print.

### Your printer is now connected.

To test your printer is working correctly follow the steps below.

#### On a PC

Go to your Control Panel  
Select Devices & Printers  
Double click on the Printer  
(DataMax-O'Neil w1110)

**Note: If DataMax O'Neil w1110 is not available please manually download your printer driver as in step 6.**

1. Select Printer from the menu bar
2. Select Properties
3. Select General
4. Select Print Test Page.

Check that your label has printed correctly. If you have any issues with the print refer to Troubleshooting later in this document.

## Troubleshooting

### Printing problems on Datamax w1110

If you experience problems with a Datamax w1110 printer, such as poor print quality, misaligned labels, jams, or flashing LED indicator lights, ensure that the roll is properly installed in the printer.

If the labels are blank, the roll may be loaded upside down.

The two green brackets in the Datamax printer are spring loaded to keep the roll in place. Slide the green brackets apart to place the roll between them with the adhesive labels on the top and the disposable material on the bottom.

If you're still having trouble, then visit  
[support.pb.com/workstation](https://support.pb.com/workstation)  
and select Errors & Troubleshooting.



\* A W 3 2 6 6 1 R E V A \*

AW32661 Rev. A 05/18  
©2018 Pitney Bowes Inc.  
All Rights Reserved

pitney bowes 

3001 Summer St.  
Stamford, CT 06926  
[www.pitneybowes.com](https://www.pitneybowes.com)